

# Spare Parts Catalogue

---

Version: 2013/06/14a NO



Invacare® XPO2®



**Yes, you can.®**

## **General Information**

*For any order of spare parts the following information is required:*

- Product type*
- Product name & model*
- Serial Number*
- Part-Number*
- Part-Description*

*Exploded view drawings and code numbers are not contractual and subject to modification, in relation to Invacare® continuous product improvement policy to meet end users needs.*

*The reproduction or use of this work, or of any substantial part of this work, in any form or by any electronic, mechanical or other means, including photocopying, scanning and recording, and in any information storage and retrieval system, including electronic transmission, is forbidden without the prior written permission of Invacare® International Sarl.*



**Yes, you can.®**

## **TABLE OF CONTENTS**

---

(Serial number sticker) .....	5
(Literature) .....	6
(Spare Parts) .....	7
(Accessories) .....	8

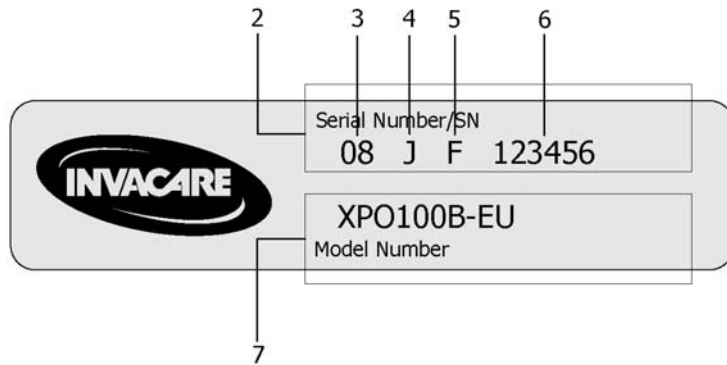


# (Serial number sticker)

1541188X100

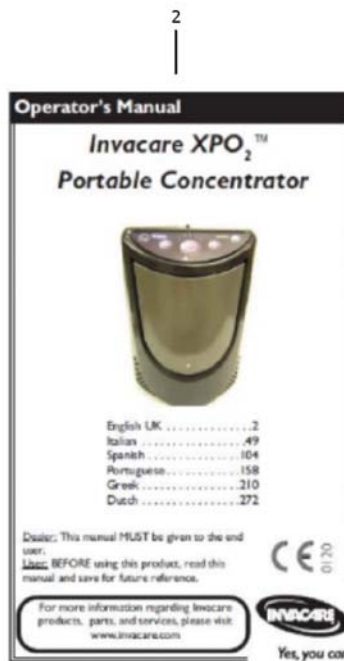
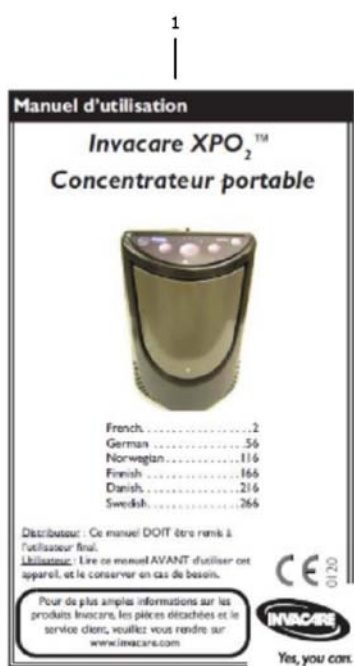


1

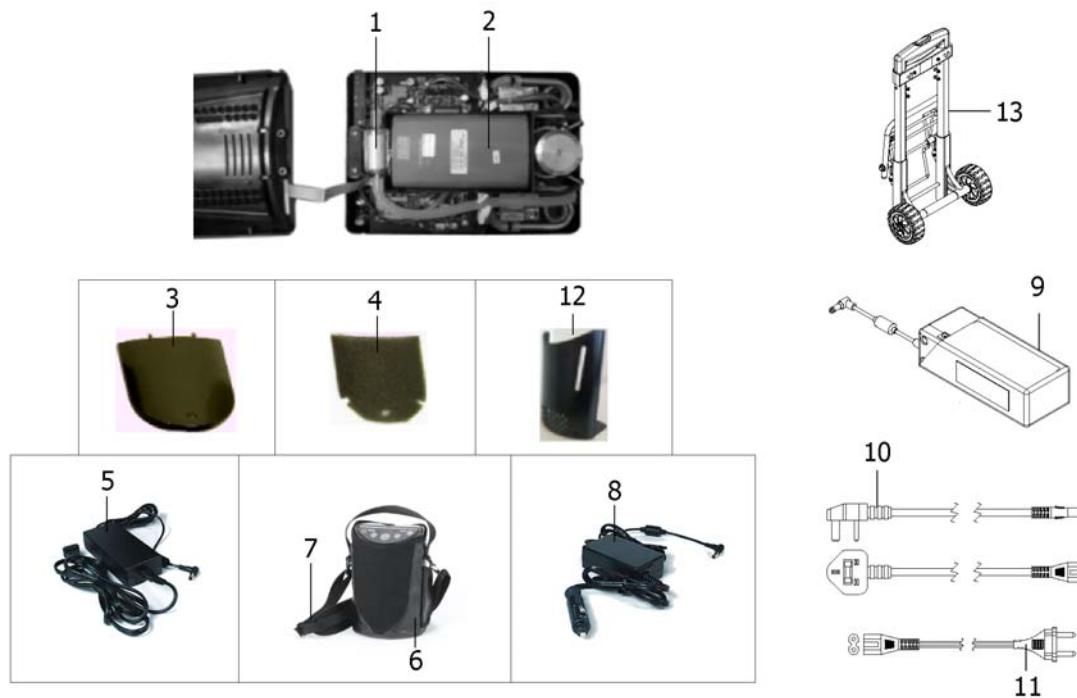



---

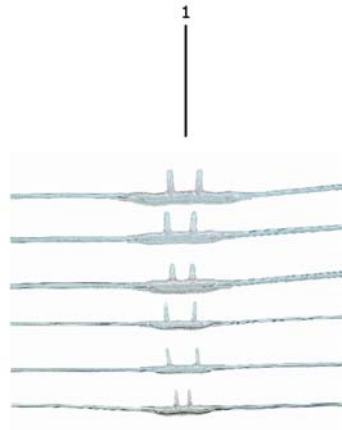
1	-	(Location of the Serial/Model Number Sticker)	1
2	-	(Serial number)	1
3	-	(Manufacturing Year)	1
4	-	(Manufacturing Month (A=Jan, B=Feb L=Dec))	1
5	-	(Manufacturing Location (F=Florida, SZ=Suzhou))	1
6	-	(Sequential number)	1
7	-	(Model Number)	1



1	1154326	BRUKERMANUAL XPO2 <i>French, German, Norwegian, Finnish, Danish and Swedish</i>	1
2	1160887	(Owner's Manual, XPO2AW, Part 2) <i>English, Italian, Spanish, Portuguese, Greek and Dutch</i>	1



1	1157693	(XPO2 Inlet Filter Kit(With Filter/Outer seal))	1
2	1157695	(Kit,Internal Battery) <i>Includes Internal battery, Instruction sheet &amp; Outer Notice</i>	1
3	1152790	(Cover Filter)	1
4	1157692	FILTER STØV XPO2 10 STK PR PAKKE <i>Pack of 10</i>	10
5	1522884-XPO132	(AC power cord for Europe)	1
5	1522884-XPO136	(AC power cord for Great Britain)	1
6	1522884-XPO150	BAG XPO2 XPO2	1
7	1154103	(Strap, Shoulder Bag)	1
8	1522884-XPO140	LADER BIL SOLO2 KONSENTRATOR <i>For use in vehicle</i>	1
	1157694	(Kit,Pad w/Seal) <i>Includes Thermal Pad (located under internal battery) and Outer Notice</i>	1
9	1522884-XPO112	ESTERNT BATTERI XPO2 <i>Includes External Battery, Pouch, Instruction sheet, language overlays and carton</i>	1
-	1151852	(Bag for external battery pack) <i>not shown</i>	1
10	1160791	(Cord,Line,2P, United Kingdom)	1
11	1152805	(Cord,Line,2P, Europe)	1
12	1151828	(Carry bag insert)	1
	1161691	(Kit,Labels, Product Overlay) <i>Set of labels for French, German, Norwegian, Finnish, Danish, Swedish, Italian, Spanish, Portuguese, Greek &amp; Dutch</i>	1
	1161692	(Kit,Labels, Battery Overlay) <i>Set of labels for French, German, Norwegian, Finnish, Danish, Swedish, Italian, Spanish, Portuguese, Greek &amp; Dutch</i>	1
	1161693	(Kit,Labels, Warrenty Void if Removed) <i>Set of labels for French, German, Norwegian, Finnish, Danish, Swedish, Italian, Spanish, Portuguese, Greek &amp; Dutch</i>	1
	1161694	(Kit,Labels, See Back Panel Label Overlay) <i>Set of labels for French, German, Norwegian, Finnish, Danish, Swedish, Italian, Spanish, Portuguese, Greek &amp; Dutch</i>	1
	1551709	(XPO2 Filter Kit) <i>Includes Gross particle filter, Inlet filter and Top Seal</i>	1
13	1522884-XPO120	TRILLESTATIV XPO2	1



---

1	1498231	(Cannula, Adult (Salter 1056) for HomeFill 2)	1
1	1524235	NESEKATETER HIGH FLOW 1,2M <i>Recommended for XPO2</i>	1
1	M3120	NESEKATETER VOKSEN 2,1 M	1
1	1524236	NESEKATETER VOKSEN 2,1 HIGH FLOW PLAT 9	1







Yes, you can.®



---

**Belgium & Luxemburg:**

Invacare nv, Autobaan 22, B-8210 Loppem  
Tel: (32) (0)50 83 10 10, Fax: (32) (0)50 83 10 11  
belgium@invacare.com / www.invacare.be

**Denmark:**

Invacare A/S, Sdr. Ringvej 37, DK-2605 Brøndby  
Tel: (45) (0)36 90 00 00, Fax: (45) (0)36 90 00 01  
denmark@invacare.com / www.invacare.dk

**Deutschland:**

Invacare Aquatec GmbH, Alemannenstraße 10, D-88316 Isny  
Tel: (49) (0)75 62 7 00 0, Fax: (49) (0)75 62 7 00 66  
info@invacare-aquatec.com / www.invacare-aquatec.de

**European Distributor Organisation:**

Invacare, Kleiststraße 49, D-32457 Porta Westfalica  
Tel: (49) (0)57 31 754 540, Fax: (49) (0)57 31 754 541  
edo@invacare.com / www.invacare.eu.com

**España:**

Invacare SA, c/Areny s/n, Polígon Industrial de Celrà, E-17460 Celrà (Girona)  
Tel: (34) (0)972 49 32 00, Fax: (34) (0)972 49 32 20  
contactsp@invacare.com / www.invacare.es

**France:**

Invacare Poirier SAS, Route de St Roch, F-37230 Fondettes  
Tel: (33) (0)2 47 62 64 66, Fax: (33) (0)2 47 42 12 24  
contactfr@invacare.com / www.invacare.fr

**Ireland:**

Invacare Ireland Ltd, Unit 5 Seatown Business Campus, Seatown Road, Swords, County Dublin - Ireland  
Tel: (353) 1 810 7084, Fax: (353) 1 810 7085  
ireland@invacare.com / www.invacare.ie

**Italia:**

Invacare Mecc San s.r.l., Via dei Pini 62, I-36016 Thiene (VI)  
Tel: (39) 0445 38 00 59, Fax: (39) 0445 38 00 34  
italia@invacare.com / www.invacare.it

**Nederland:**

Invacare BV, Celsiusstraat 46, NL-6716 BZ Ede  
Tel: (31) (0)318 695 757, Fax: (31) (0)318 695 758  
nederland@invacare.com, csede@invacare.com / www.invacare.nl

**Norge:**

Invacare AS, Grensesvingen 9, Postboks 6230, Etterstad, N-0603 Oslo  
Tel: (47) (0)22 57 95 00, Fax: (47) (0)22 57 95 01  
norway@invacare.com, island@invacare.com / www.invacare.no

**Österreich:**

Invacare Austria GmbH, Herzog Odilostrasse 101, A-5310 Mondsee  
Tel: (43) 6232 5535 0, Fax: (43) 6232 5535 4  
info-austria@invacare.com / www.invacare.at

**Portugal:**

Invacare Lda, Rua Estrada Velha, 949, P-4465-784 Leça do Balio  
Tel: (351) (0)225 1059 46/47, Fax: (351) (0)225 1057 39  
portugal@invacare.com / www.invacare.pt

**Sverige & Suomi:**

Invacare AB, Fagerstagatan 9, S-163 91 Spånå  
Tel: (46) (0)8 761 70 90, Fax: (46) (0)8 761 81 08  
sweden@invacare.com, finland@invacare.com / www.invacare.se

**Switzerland:**

Invacare AG, Benkenstrasse 260, CH-4108 Witterswil  
Tel: (41) (0)61 487 70 80, Fax: (41) (0)61 487 70 81  
switzerland@invacare.com / www.invacare.ch

**United Kingdom:**

Invacare Limited, Pencoed Technology Park, Pencoed, Bridgend CF35 5AQ  
Switchboard Tel: (44) (0)1656 776200, Fax: (44) (0)1656 776201  
Customer services Tel: (44) (0)1656 776222, Fax: (44) (0)1656 776220  
uk@invacare.com / www.invacare.co.uk